

# CYCSA Yorke Peninsula St Vincent Gulf Mooring Inspection

Inspection month: October/November 2024

## Black Point

### North

**Coordinates:** S34 36.405' E137 53.558'

**Description:** 2 truck tires filled with concrete (approximately 400 to 450 kgs each) and 1 concrete mooring (approx. 850kg), 12m of 20mm chain (galv), 15m of 32mm green supertec rope, 1 rope weight. Red mooring buoy with silver "CYCSA" text painted. All components are in good condition. Rope and buoy were cleaned.



### South West

**Coordinates:** S34 36.477' E137 53.620'

**Description:** 2 truck tires filled with concrete (approximately 400 to 450 kgs each) and 1 concrete mooring (approx. 850kg), 12m of 20mm chain (galv), 15m of 32mm green supertec rope, 1 rope weight. Red mooring buoy with silver "CYCSA" text painted. All components are in good condition. Rope and buoy were cleaned.



### South East

**Coordinates:** S34 36.458' E137 53.73'

**Description:** 2 truck tires filled with concrete (approximately 400 to 450 kgs each) and 1 concrete mooring (approx. 850kg), 12m of 20mm chain (galv), 15m of 32mm green supertec rope, 1 rope weight. Red mooring buoy with silver "CYCSA" text painted. Rope and buoy were cleaned.



**STUART**  
SERVICES

Servicing all areas in South Australia

MOORING INSTALLATION,  
MAINTENANCE & INSPECTION

ROPE SPLICING

SALVAGE

DIVING

**JACK & BEN STUART**

Mobile. 0468 626 036

Email. stuartserviceswork@gmail.com

# Stansbury

## North

**Coordinates:** S34 53.900' E137 48.057'

**Description:** 2 truck tires filled with concrete and 1 train wheel (existing) (approx. 400 to 450 kgs each). 12m of 20mm chain (galv), 15m of 32mm green supertec rope, 1 rope weight. Red mooring buoy with silver "CYCSA" text painted. 1 anode on the existing train wheel loop was replaced. All components are in good condition. Rope and buoy were cleaned. Consider replacing train wheel with truck tire filled with concrete as train wheel loops deteriorating.



## Mid

**Coordinates:** S34 53.977' E137 48.048'

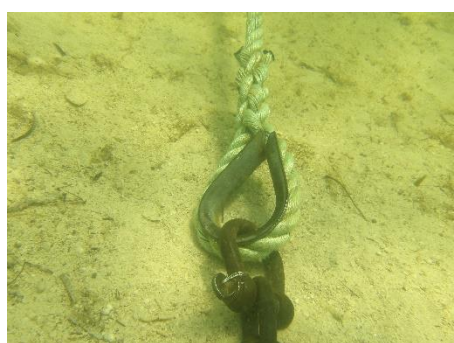
**Description:** 2 truck tires filled with concrete and 1 train wheel (existing) (approx. 400 to 450 kgs each). 12m of 20mm chain (galv), 15m of 32mm green supertec rope, 1 rope weight. Red mooring buoy with silver "CYCSA" text painted. 1 anode on the existing train wheel loop replaced. All components are in good condition. Rope and buoy were cleaned. Consider replacing train wheel with truck tire filled with concrete as train wheel loops deteriorating.



## South

**Coordinates:** S34 54.003' E137 48.011'

**Description:** 2 truck tires filled with concrete and 1 train wheel (existing) (approx. 400 to 450 kgs each). 12m of 20mm chain (galv), 15m of 32mm green supertec rope, 1 rope weight. Red mooring buoy with silver "CYCSA" text painted. 1 anode on the existing train wheel loop replaced. All components in good condition. Rope and buoy were cleaned. Consider replacing train wheel with truck tire filled with concrete as train wheel loops deteriorating.



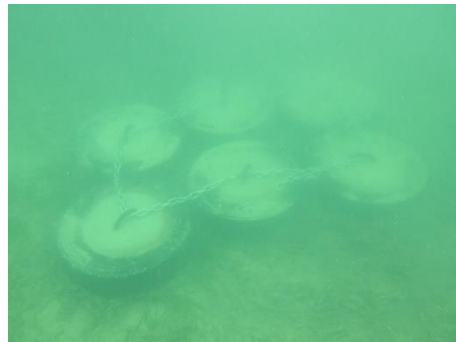


## Stansbury

### Mega mooring

**Coordinates:** S34 53.932' E137 48.102'

**Description:** 6 truck tires filled with concrete (approximately 400 to 450 kgs each), 2500kg (approx.), total. 13m of 28mm stud link chain, 15m of 32mm green supertec rope, 1 rope weight. Red mooring buoy with black lines and "CYCSA H" text. Installed on 04/08/2024.



## Edithburgh

### North West (previously North)

**Coordinates:** S35 05.674' E137 45.010'

**Description:** 3 truck tires filled with concrete (approximately 400 to 450 kgs each). 12m of 20mm chain (galv), 15m of 32mm green supertec rope, 1 rope weight. Red mooring buoy with silver "CYCSA" text painted. All components are in good condition. Rope and buoy were cleaned.



### North East (previously Mid)

**Coordinates:** S35 05.677' E137 45.068' \*new location in deeper water (previously S35 05.692' E137 44.963')

**Description:** 3 truck tires filled with concrete (approximately 400 to 450 kgs each). 12m of 20mm chain (galv), 15m of 32mm green supertec rope, 1 rope weight. Red mooring buoy with black "CYCSA" text engraved. All components are in good condition. Replaced rope due to damage.



### South

**Coordinates:** S35 05.725' E137 44.998'

**Description:** 3 truck tires filled with concrete (approximately 400 to 450 kgs each). 12m of 20mm chain (galv), 15m of 32mm green supertec rope, 1 rope weight. Red mooring buoy with silver "CYCSA" text painted. All components are in good condition. Reinstated loop which had pulled through buoy. Rope and buoy were cleaned.

