

North Haven Boat Marina – Maintenance Dredging

Advance Notice

What’s happening:

We will be undertaking routine maintenance dredging at **North Haven Boat Marina** to achieve the necessary depths required to maintain a safe and navigable marina for vessels that operate out of North Haven. Work will involve removing sand and seagrass from inside the channel, extending out through the entrance.

How this affects you:

Works are expected to commence in **July 2024** and be completed in **September 2024**. The exact completion date will be dependent on the amount of work required, weather conditions and operating restrictions.

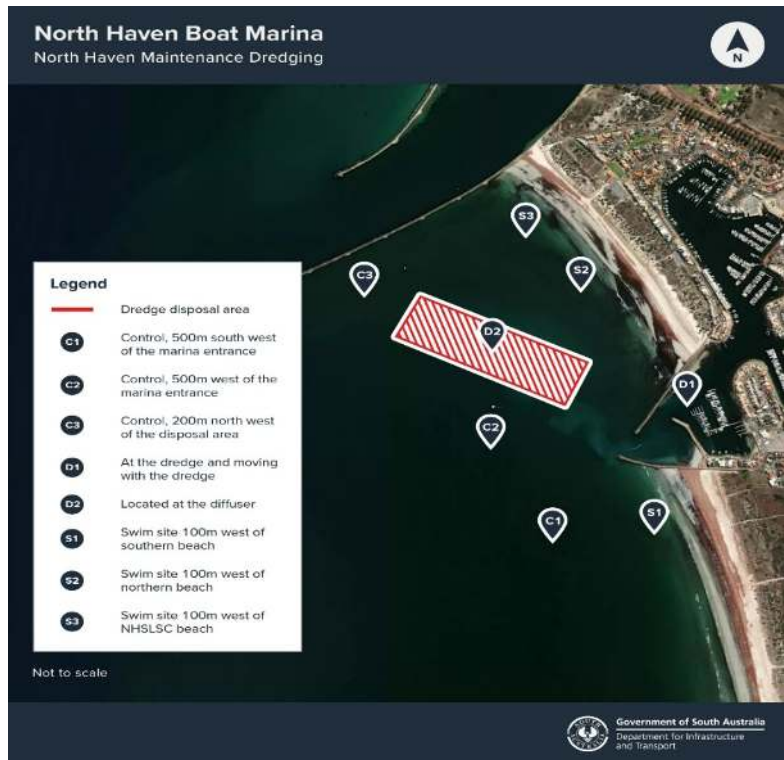
Works may be undertaken for up to 24 hours a day, 7 days a week. There will be strict guidelines for work between **10 PM – 7 AM** to reduce noise levels for residents.

This activity will not require the closure of the boat ramp. Mariners and boat users will need to comply with the safety rules as displayed at the boat ramp and over the page.

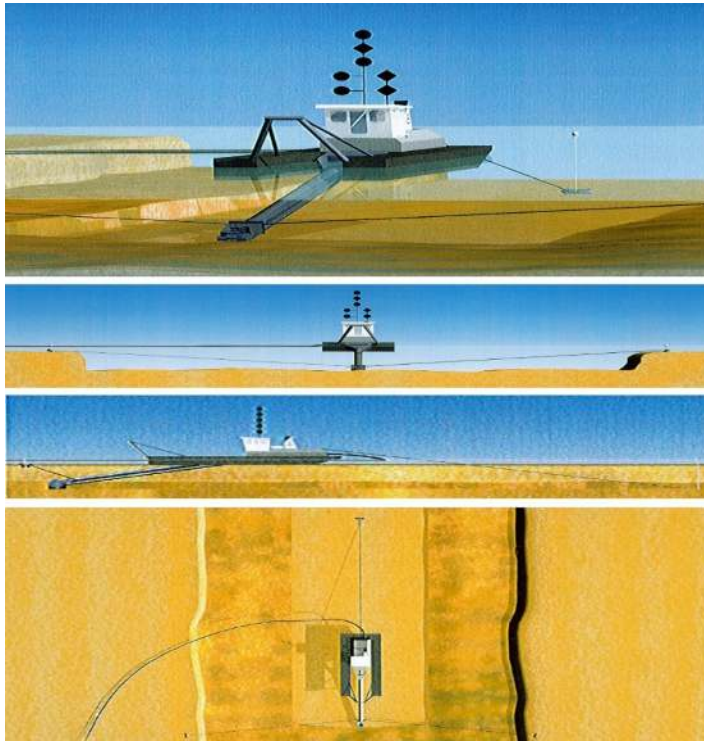
A cutter suction dredge will be operational (operating on a three-point mooring system) within the North Haven Marina and dredged materials will be pumped to the northwest of the dredging site. A single dredge will be positioned facing into the marina with approximately 700-1000m of pipe running to the designated disposal site.

Some water discolouration at the disposal site could be expected during the works but will not persist past project completion. These works are undertaken under the Environmental Protection Authority (EPA) guidelines.

Normal water quality monitoring will be conducted daily and in accordance with Water Quality Management Plan (WQMP).



Dredge Safety Instructions for mariners and boat ramp users.



- Pass at 4 Knot or less.
- Pass on the side showing two diamonds during the day.
- Pass on the side showing two green lights at night.
- Pass close to the dredge rather than out near anchors while the dredge is operating.
- Never approach within 100m directly astern of the dredge
- Be aware of the pipeline's location and movement.
- Contact the dredge on VHF Ch 14 if unsure what to do.

Please note: The graphics used here are for illustrations purpose only. The actual position of the dredge, anchors and pipeline will vary depending on location and/or conditions.

For further information:

- Contact the project team via email at Dit.engagement@sa.gov.au
- Call 1300 794 880