

CYCSA Yorke Peninsula St Vincent Gulf Mooring Inspection

Inspection month: October 2023

Black Point

North (previously South West (new location))

Coordinates: S34 36.405' E137 53.558' (previously S34 36.535' E137 53.581')

Description: 2 truck tires filled with concrete (approximately 400 to 450 kgs each) and 1 concrete mooring (existing, approx. 850kg), 12m of 20mm chain (galv), 15m of 32mm green supertec rope, 1 rope weight. Red mooring buoy with silver "CYCSA" text painted. All components are in good condition. Mooring was moved to deeper water. Rope and buoy were cleaned.



South West (previously North)

Coordinates: S34 36.477' E137 53.620'

Description: 2 truck tires filled with concrete (approximately 400 to 450 kgs each) and 1 concrete mooring (existing, approx. 850kg), 12m of 20mm chain (galv), 15m of 32mm green supertec rope, 1 rope weight. Red mooring buoy with silver "CYCSA" text painted. All components are in good condition. Rope and buoy were cleaned.



South East (previously South East (new location)) –

Coordinates: S34 36.458' E137 53.73' (previously S34 36.556' E137 53.666')

Description: 2 truck tires filled with concrete (approximately 400 to 450 kgs each) and 1 concrete mooring (existing, approx. 850kg), 12m of 20mm chain (galv), 15m of 32mm green supertec rope, 1 rope weight. Red mooring buoy with silver "CYCSA" text painted. All components are in good condition. Mooring was moved to deeper water. Rope and buoy were cleaned.



STUART
SERVICES

Servicing all areas in South Australia

MOORING INSTALLATION,
MAINTENANCE & INSPECTION

ROPE SPLICING

SALVAGE

DIVING

JACK & BEN STUART

Mobile. 0468 626 036

Email. stuartserviceswork@gmail.com

Stansbury

North (previously North (new location))

Coordinates: S34 53.900' E137 48.057' (previously S34 53.993' E137 47.977')

Description: 2 truck tires filled with concrete and 1 train wheel (existing) (approximately 400 to 450 kgs each). 12m of 20mm chain (galv), 15m of 32mm green supertec rope, 1 rope weight. Red mooring buoy with silver "CYCSA" text painted. 1 anode on existing train wheel loop was replaced. All components in good condition. Mooring was moved to deeper water. Rope and buoy were cleaned.



South (previously South East)

Coordinates: S34 54.003' E137 48.011'

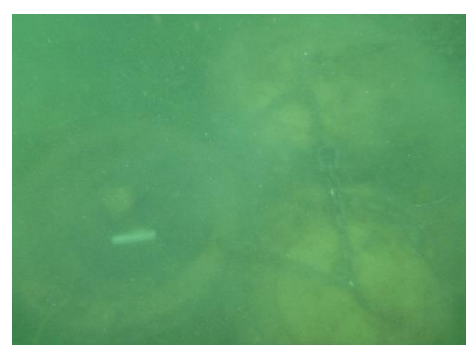
Description: 2 truck tires filled with concrete and 1 train wheel (existing) (approximately 400 to 450 kgs each). 12m of 20mm chain (galv), 15m of 32mm green supertec rope, 1 rope weight. Red mooring buoy with silver "CYCSA" text painted. 1 anode on existing train wheel loop still serviceable. All components in good condition. Rope and buoy were cleaned.



Mid (previously South West (new location))

Coordinates: S34 53.977' E137 48.048' (previously S34 54.017' E137 47.986')

Description: 2 truck tires filled with concrete and 1 train wheel (existing) (approximately 400 to 450 kgs each). 12m of 20mm chain (galv), 15m of 32mm green supertec rope, 1 rope weight. Red mooring buoy with silver "CYCSA" text painted. 1 anode on existing train wheel loop replaced. All components are in good condition. Mooring was moved to deeper water. Rope and buoy were cleaned.



Edithburgh

North

Coordinates: S35 05.674' E137 45.010'

Description: 3 truck tires filled with concrete (approximately 400 to 450 kgs each). 12m of 20mm chain (galv), 15m of 32mm green supertec rope, 1 rope weight. Red mooring buoy with silver "CYCSA" text painted. All components are in good condition. Rope and buoy were cleaned.



Mid

Coordinates: S35 05.692' E137 44.963'

Description: 3 truck tires filled with concrete (approximately 400 to 450 kgs each). 12m of 20mm chain (galv), 15m of 32mm green supertec rope, 1 rope weight. Red mooring buoy with silver "CYCSA" text painted. All components are in good condition. Rope and buoy were cleaned.



South

Coordinates: S35 05.725' E137 44.998'

Description: 3 truck tires filled with concrete (approximately 400 to 450 kgs each). 12m of 20mm chain (galv), 15m of 32mm green supertec rope, 1 rope weight. Red mooring buoy with silver "CYCSA" text painted. All components are in good condition. Rope and buoy were cleaned.

